

CALIFORNIA ATHLETICS

Winning...

*Duje Draganja
Men's Swimming & Diving
Olympic Silver Medalist*

*Natalie Coughlin
Women's Swimming & Diving
Five-Time Olympic Medalist*

RECENT TEAM NATIONAL CHAMPIONS



2006 MEN'S CREW



2004 MEN'S GOLF



2006 RUGBY



*Tim McNeill
Men's Gymnastics
2006 NCAA Champion
Pommel Horse*

*Jessica Hardy
Women's Swimming & Diving
2006 NCAA Champion
100 Breaststroke*

*Helen Silver
Women's Swimming & Diving
2006 NCAA Champion
200 Backstroke*

*Suzi Babos
Women's Tennis
2006 NCAA Singles Champion*

*Brandon Morrow
Baseball
2006 All-Pac-10
Fifth player selected in
Major League Draft*

— BOWL CHAMPIONS —

2003 INSIGHT BOWL

2005 LAS VEGAS BOWL



...is a Cal tradition!

— Cal Owns the Stanford Axe —



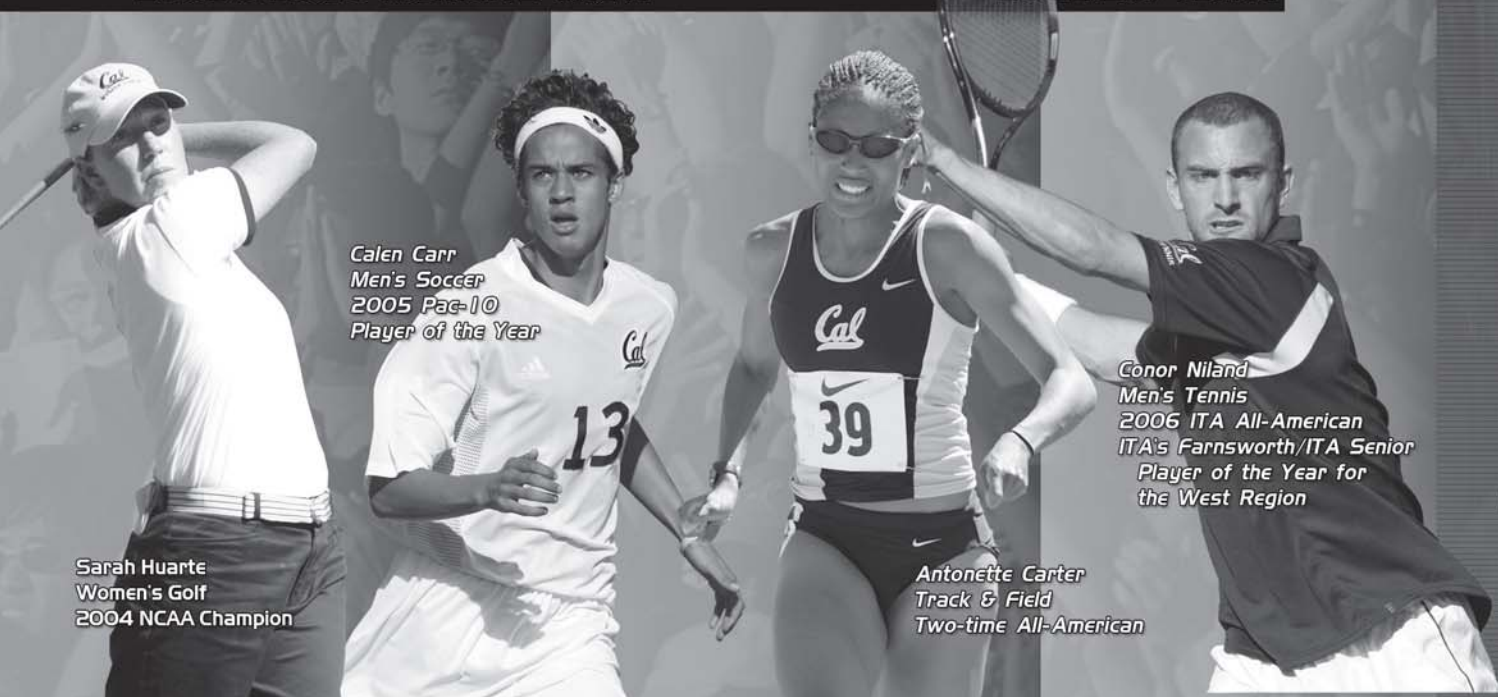
J.J. Arrington



2005 & 2006 WOMEN'S CREW



2002 SOFTBALL



Sarah Huarte
Women's Golf
2004 NCAA Champion

Calen Carr
Men's Soccer
2005 Pac-10
Player of the Year

Antonette Carter
Track & Field
Two-time All-American

Conor Niland
Men's Tennis
2006 ITA All-American
ITA's Farnsworth/ITA Senior
Player of the Year for
the West Region

Winning is a Cal Tradition

MEMORIAL STADIUM

The Past...

HISTORIC, PICTURESQUE AND SOON TO BE MODERN

For California fans and alumni, there truly is no place like California Memorial Stadium. A full 83 football seasons since its opening in 1923, Memorial Stadium remains one of the most breathtaking sites in all of college athletics.

The plush wall of pine trees in the Berkeley Hills to the east, is contrasted by a panoramic view of the San Francisco Bay and three bridges to the west.

Designed by world-renowned architect John Galen Howard and co-designers G.F. Buckingham and E.E. Carpenter, the stadium is a tribute to their architectural talents, skills that were years ahead of their time. Fans who attend games today still marvel at the beauty of the structure, modeled after the Colosseum in Rome, and comment about the easy viewing for spectators from all angles within the stadium.

The stadium was completed in time for the Big Game of 1923 at a total cost of \$1,437,982. It was constructed in sections with expansion joints to withstand earth movement. Included in the initial construction were 12,000 barrels of cement, 1.1 million feet of lumber for concrete forms, 8,000 cubic yards of rock, 4,000 cubic yards of sand, 600 tons of steel, 800,000 feet of premium lumber which was used for seating, and 2,500 pine trees which today serve as the backdrop for the stadium.

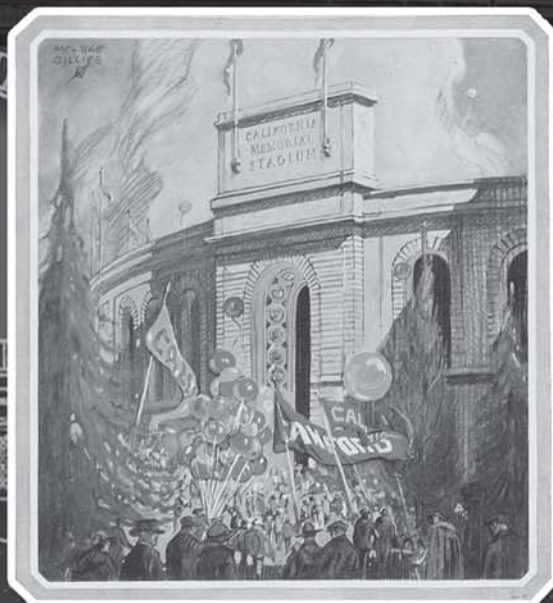
Original plans for the stadium called for a capacity of 60,000, but they were altered in favor of a capacity closer to 80,000. The seating capacity has fluctuated due to renovation and other changes, but in 1947, a crowd of 83,000 watched Cal defeat Navy, 14-7, a feat which may have prompted Cal officials to establish an official capacity for the stadium. In the 1960s, temporary bleachers on the east side were removed and added wheelchair seating and aluminum bleachers followed in the 1980s. For 2001, the press box was rebuilt, giving the stadium an official capacity of 73,347.

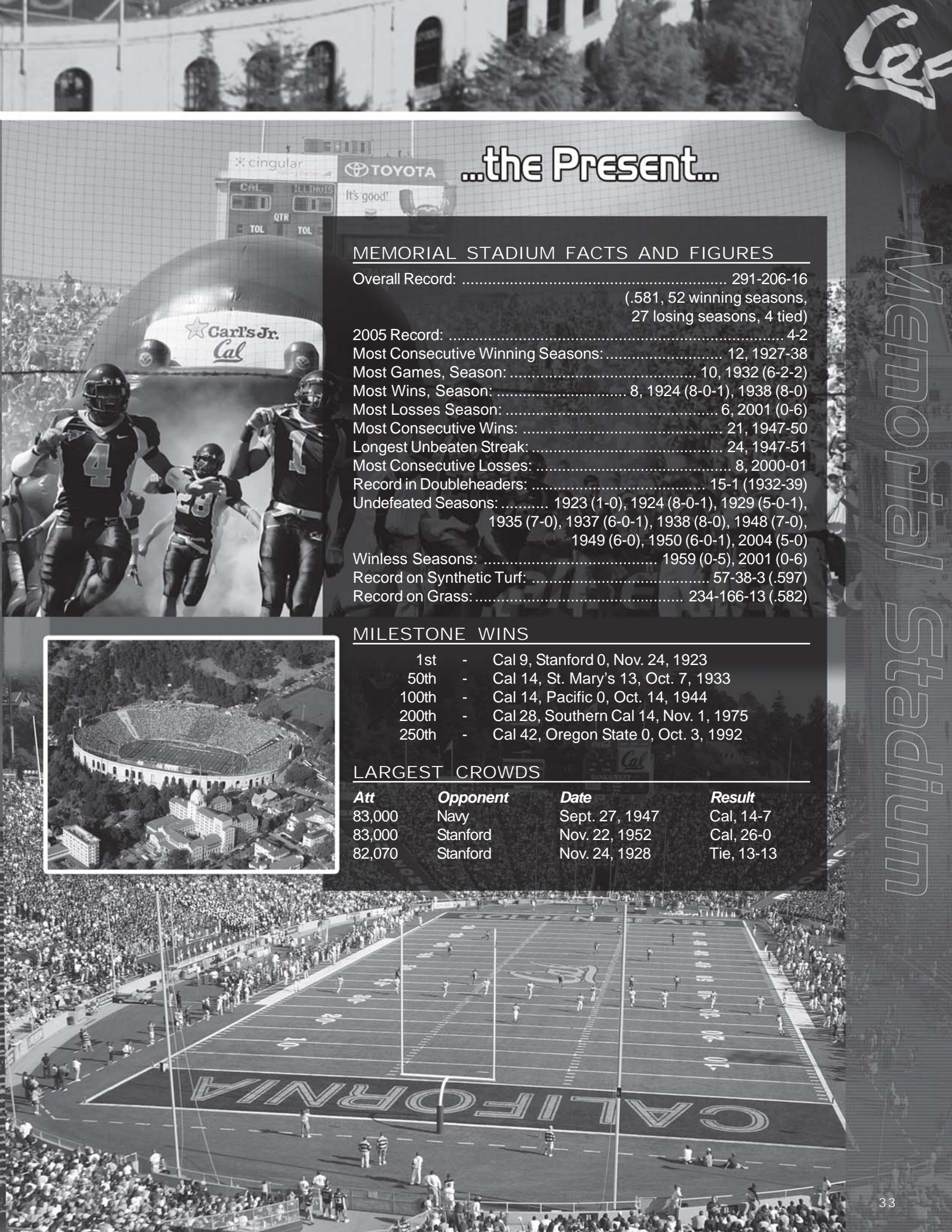
Overall, Cal football teams through the years have played before crowds of 70,000 or more on 57 occasions and there have been 21 games that attracted in excess of 80,000 spectators.

There are bigger stadiums, newer stadiums and stadiums with grander reputations.

But there is no finer place to watch a college football game than Memorial Stadium on the campus of the University of California at Berkeley.

*Decatur (IL) Herald & Review
Sept. 18, 2005*





...the Present...

MEMORIAL STADIUM FACTS AND FIGURES

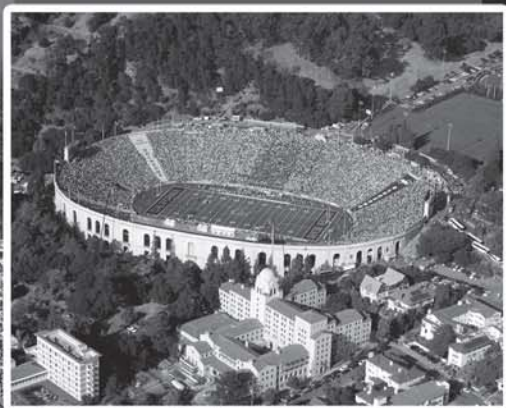
Overall Record:	291-206-16 (.581, 52 winning seasons, 27 losing seasons, 4 tied)
2005 Record:	4-2
Most Consecutive Winning Seasons:	12, 1927-38
Most Games, Season:	10, 1932 (6-2-2)
Most Wins, Season:	8, 1924 (8-0-1), 1938 (8-0)
Most Losses Season:	6, 2001 (0-6)
Most Consecutive Wins:	21, 1947-50
Longest Unbeaten Streak:	24, 1947-51
Most Consecutive Losses:	8, 2000-01
Record in Doubleheaders:	15-1 (1932-39)
Undefeated Seasons:	1923 (1-0), 1924 (8-0-1), 1929 (5-0-1), 1935 (7-0), 1937 (6-0-1), 1938 (8-0), 1948 (7-0), 1949 (6-0), 1950 (6-0-1), 2004 (5-0)
Winless Seasons:	1959 (0-5), 2001 (0-6)
Record on Synthetic Turf:	57-38-3 (.597)
Record on Grass:	234-166-13 (.582)

MILESTONE WINS

1st	-	Cal 9, Stanford 0, Nov. 24, 1923
50th	-	Cal 14, St. Mary's 13, Oct. 7, 1933
100th	-	Cal 14, Pacific 0, Oct. 14, 1944
200th	-	Cal 28, Southern Cal 14, Nov. 1, 1975
250th	-	Cal 42, Oregon State 0, Oct. 3, 1992

LARGEST CROWDS

Att	Opponent	Date	Result
83,000	Navy	Sept. 27, 1947	Cal, 14-7
83,000	Stanford	Nov. 22, 1952	Cal, 26-0
82,070	Stanford	Nov. 24, 1928	Tie, 13-13



Memorial Stadium

...and Future!

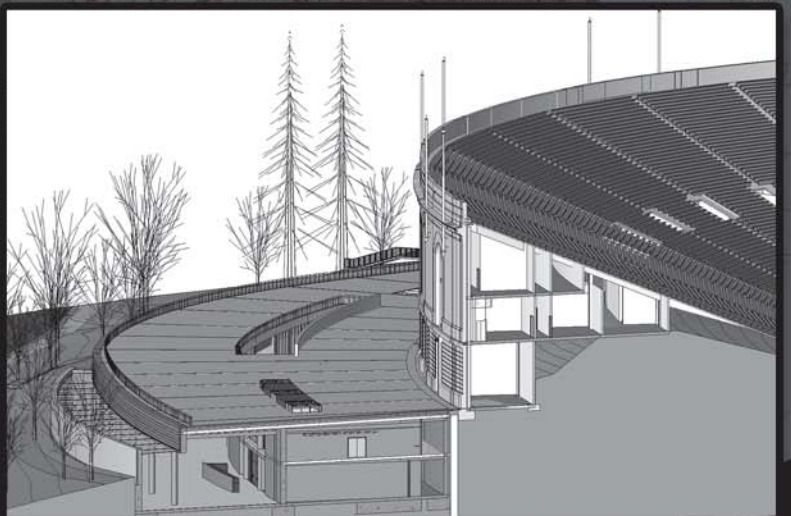
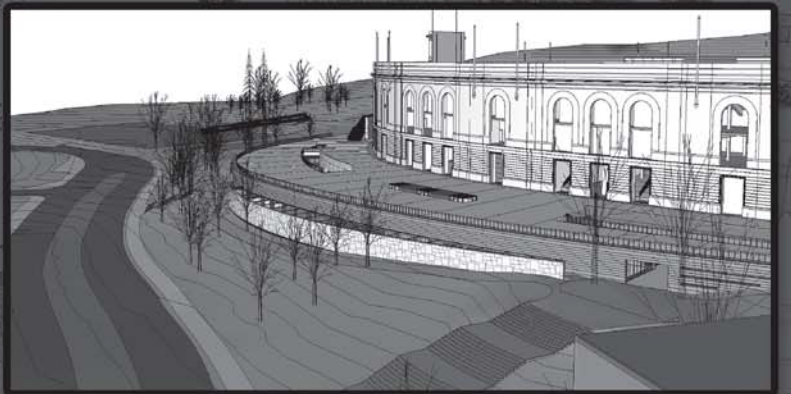
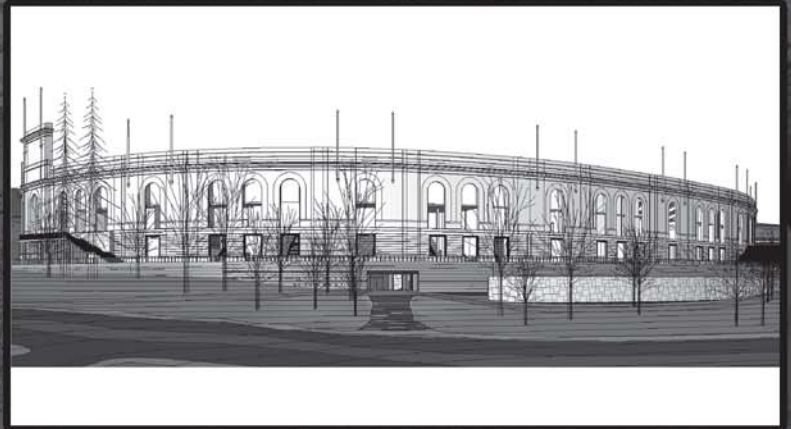
MEMORIAL STADIUM RENOVATION PROJECT

Construction of the first step of the stadium plan – the student athlete High Performance Center – is scheduled to begin in December 2006, pending environmental review and approval by the UC Board of Regents. It is to be ready for the 2008 football season with an estimated cost between \$100 million and \$125 million.

- The master plan provides for a phased approach that will guide construction of new athletic facilities, overall stadium improvements and seismic retrofit, as well as improved fan access and amenities, and exterior site and landscape improvements.

- The 132,500-square-foot, state-of-the-art High Performance Center will include operations for strength and conditioning, sports medicine and nutrition. Thirteen of the 27 Cal intercollegiate sports, including football and 12 Olympic sports, will operate out of Memorial Stadium when the first phase is completed. Along with offices, the new area will include a study center and meeting spaces.

- The stadium, considered by many to be one of the most beautiful settings for collegiate football, was originally constructed with funds donated by alumni, faculty, students and fans. At the time, Robert Gordon Sproul, who became UC president in 1930, said that the stadium “stands in simple dignity, beauty and strength.”



Cal®

ATHLETIC FACILITIES

As a student-athlete at Cal, you have the privilege of using quality athletic facilities. Major athletic facilities located on the Cal campus are listed below.

CALIFORNIA MEMORIAL STADIUM

This stadium is the home of the Golden Bears football team. It not only holds over 67,537 spectators, but also includes athletic administrative offices, training quarters, weight room, equipment room and locker rooms.

EDWARDS STADIUM/ GOLDMAN FIELD

Historic Edwards Stadium/Goldman Field, which opened in 1932, is home to the California track & field and soccer teams.

EVANS DIAMOND

This baseball park facility seats over 3,800 people and is used by the baseball team for practices and games.

GOLDEN BEAR RECREATION CENTER

The Golden Bear Recreation Center has a softball field and a track with an interior field suitable for soccer and other field sports. There is a swimming pool, sand volleyball courts, and tennis courts. The GBRC is also the practice site of the Cal men's and women's gymnastics teams and year-round youth programs.

HAAS PAVILION

The Walter A. Haas Jr. Pavilion is the home for the basketball, volleyball, and gymnastics teams. The Athletic Director, Student Services, and Compliance offices are also located in the pavilion.

MAXWELL FAMILY FIELD

Maxwell Family Field, located just north of Memorial Stadium, serves as home to the Cal field hockey program.

HELLMAN TENNIS STADIUM

California tennis makes its home at the Hellman Tennis Complex, located on the southwest side of campus.

LEVINE-FRICKE FIELD

Nestled at the base of Strawberry Canyon, the Levine-Fricke Field, home of the 2002 NCAA Champions, is the venue for the Golden Bear softball team.

RECREATIONAL SPORTS FACILITY (RSF)

This state of the art intramural and recreational sports facility offers aerobics, badminton, basketball, volleyball, weight training, table tennis, yoga, racquetball, handball and squash.

SPIEKER AQUATICS COMPLEX

Varsity water polo and swim team practices and competitions are held at Spieker Pool. Recreational swimming is also scheduled for the times when these teams are not hosting events or practicing.

T. GARY ROGERS BOATHOUSE

The newly completed and renovated crew boathouse is located on the Oakland Estuary where the men's rowing team practices.

WITTER RUGBY FIELD

The Witter Rugby Field is part of Strawberry Canyon. This grass field is used for rugby practice and competition.



Edwards Stadium/ Goldman Field



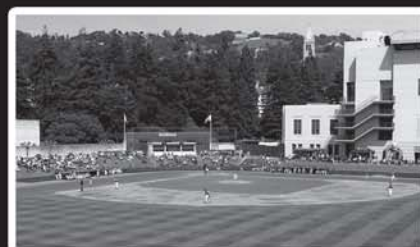
Maxwell Family Field



Levine-Fricke Field



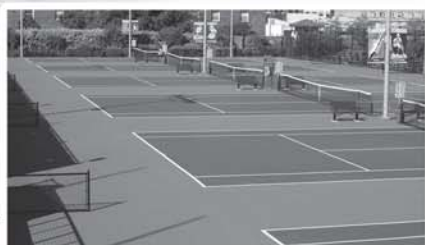
Spieker Pool



Evans Diamond



T. Gary Rogers Boathouse



Hellman Tennis Stadium



Haas Pavilion